

we care 

primus

laundry equipment

High Spin Industrial Washer Extractor

FS 80



FEATURES

- Freestanding, high spin
- Stainless steel cabinet (AISI 304)
- Stainless steel drum and tub
- Graphitronic® - new graphic display with almost unlimited possibilities as:
 - Communication interface enabling remote service
 - Multilingual microprocessor
 - Freely programmable
- Extra large door opening (Ø530 mm)
- Two large drain valves (Ø103 mm)
- Easy access to all parts
- Standard liquid soap connections
- Frequency controlled motor
- PowerWash® perforated lifting ribs: more mechanical action, lower water consumption
- Air operated water inlet
- SuperEco washing programmes
 - significantly reduces water and electricity consumption

OPTIONS

- Patented soap dispenser with 5 removable compartments
- Liquid soap pumps
- Trace-Tech® traceability software and networking system
- Electrical heating



ROBUST DESIGN



EXTRA LARGE
DOOR



EASY OPERATION

POWERWASH®

supereco

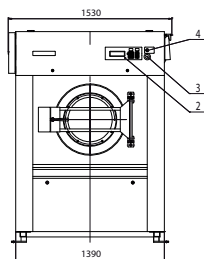
Graphitronic®

TRACE-TECH®

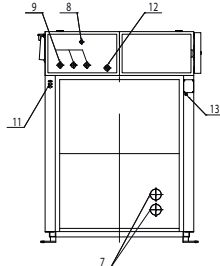
TYPE		FS 80
CAPACITY		
Drum volume	l	807
Capacity	kg	80
	lbs	176
Drum diameter	mm	Ø1110
MOTOR		
Frequency controlled		standard
DRUM SPEED		
Wash speed	rpm	36
Spin speed	rpm	750
G-Factor spin speed		350
PROGRAMMER		
Graphitronic® microprocessor		standard
CABINET		
Stainless steel AISI 304		standard
DRUM		
Stainless steel AISI 304		standard
HEATING		
Steam high pressure	bar	3-8
	psi	44-116
Electrical heating	kW	67,5
CONNECTION		
Electrical		3×380-480V 50/60Hz 3×208-240V 50/60Hz
Water inlet	kW	11,25
Steam inlet	inch	3×1 1/2"
Compressed air inlet	inch	1"
Drain	mm	Ø8
	mm	103
		4"
DIMENSIONS H×W×D	mm	1996x1530x1797
TRANSPORT DATA		
Gross weight		
Case packaging	kg	2830
Net weight	kg	2640
Volume (packed)	m³	7,25
Case packaging H×W×D	mm	2200×1690×1950
WATER CONSUMPTION		
Cold and hot water per cycle*	l	693 + 122

- = Not available, * Tested in accordance of EN 604 56 norm
Standard = Standard execution, The data concerning dimensions of machines include all extended parts

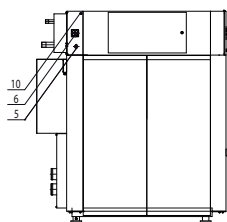
FRONT FS80



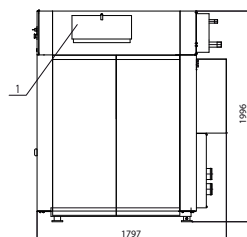
BACK FS80



LEFT SIDE FS80



RIGHT SIDE FS80



1. Soap hopper (optional)
2. Key board
3. Emergency stop
4. Change-over switch of programming regime
5. Electrical connection
6. Main switch
7. Drain valves
8. Steam connection
9. Water inlets (3rd optional)
10. Air supply
11. Liquid soap connections
12. Drum ventilation
13. Electrical connection of liquid soap

The company Primus preserves the right to change the machines and the specification in this leaflet at any time, without prior notice. Details and photographs are only for information and never binding.

www.primuslaundry.com

ISO 9001
ISO 14001
BUREAU VERITAS
Certification

