



SINGLE-STAGE EXTRACTION PRESS

FOR AUTOMATED CBW® BATCH WASHING SYSTEMS



MP1603

RUGGED, VERSA

Another extraction alternative for Milnor tunnel systems!

Milnor's single-stage membrane press makes it even easier to tailor a continuous batch system to your needs. Choose from **three Milnor extractors** — single-stage press, two-stage press, or centrifugal extractor — along with a variety of batch washer and dryer sizes, materials handling systems, and control options. You can meet production and space requirements in the way that suits you best.

Extracts wide variety of goods.

This single-station press can process **100% polyester, blends, and all-cotton** effectively. Several features provide careful treatment while exerting pressure appropriate for the goods. To remove water pockets and avoid hydroburst, goods can be tamped by the membrane before final pressure. Ram movement and pressure (up to 50 bar) are programmable.



Wet goods enter here and are pressed by waterless membrane.

Saves space.

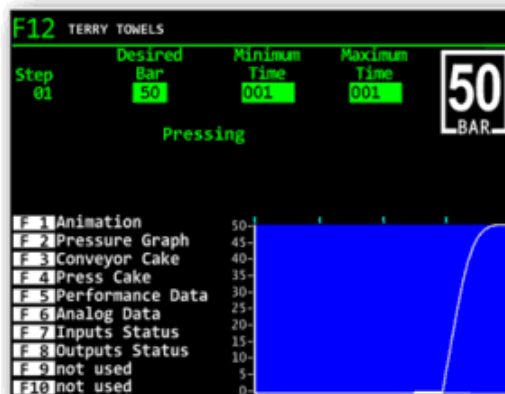
Compact design requires less space. And the press can be ordered for **various installation arrangements** — in-line or 90° angle in either direction — to fit your laundry's size and shape.



Single-stage press: This membrane press processes almost any type of goods in one station. It's a good choice when space is tight.



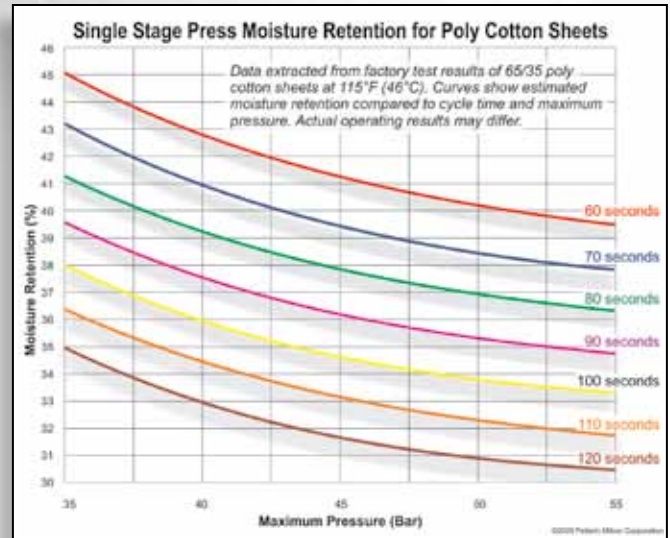
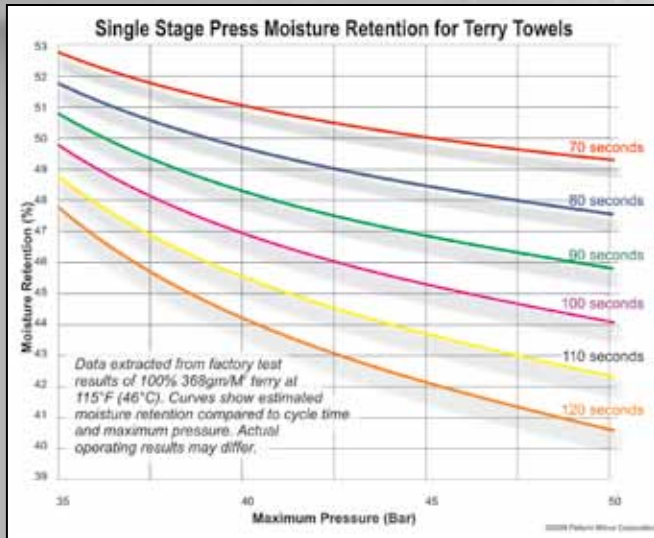
Designed for easy service: Hinged press water return pump simplifies press maintenance.



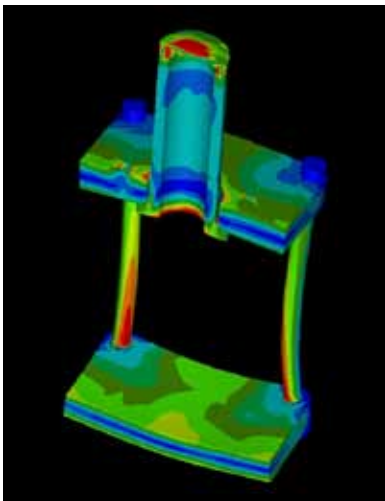
Run Screen control

Easy-to-read and easy-to-program. The operator can monitor the press in real-time with this large LCD display.

ATILE, STRONG.



Moisture Retention: These graphs illustrate how much moisture can be expelled in terry towels and poly-cotton sheets in Milnor's presses. The more moisture removed, the more money you save in dryer fuel costs.



This computer stress model shows the rigid structure that absorbs stress for long life.

Ruggedly built.

Rigid structure absorbs stress for long life. A thick, solid steel platform supports the hydraulic press cylinder and pressure system. It is linked to the bottom plate by four steel columns, using massive, specially designed locknuts. The hydraulic system uses an elastomer interfaced connection to prevent leaks. Its separate recirculation/air cooling loop (standard) provides both optimum fluid filtration and **cooling for reliability and long life**. Easy cleaning helps enhance plant hygiene.

Control is versatile, simple.

Proven microprocessor control provides 16 programmable extraction sequences. Forty-character, alphanumeric display tells operating status – including time remaining in extraction cycle, loading status, and status for receiving another load. It also shows production and accounting data, plus fault recognition with error statements. Control components are interchangeable with those of other Milnor machines, to simplify inventory. Control can be linked to the Mildata® computer system for central programming, data collection, and system monitoring.

It's productive and efficient.

Stainless steel press basket accommodates up to 110 lbs. (50 kg), 150 lbs. (68 kg), or 250 lbs. (115 kg) of standard cotton sheets. The basket's large diameter keeps the cake relatively flat for **fast drainage**. Extracted water is pumped to the CBW washer for reuse. After completion of a cycle, two hydraulic cylinders lift the basket and an integral conveyor (which helps keep the cake intact) moves the cake to the next position for conditioning or drying. A special unloading sequence prevents the cake from sticking.



*XML Tag compatible

SPECIFICATIONS

SINGLE-STAGE EXTRACTION PRESS	MPI540		MPI550		MPI603		MPI604		MPIA03	
Batch Size – lbs. (kg)	90-110	(41-50)	90-110	(41-50)	110-150	(50-68)	110-150	(50-68)	250	(115)
Nominal cake diameter – ins. (mm)	35.4	(900)	35.4	(900)	39.37	(1000)	39.37	(1000)	48	(1219)
Standard minimum cycle time – secs	75	—	75	—	75	—	75	—	90	—
Maximum pressure – psi (bar)	580	(40)	725	(50)	508	(35)	725	(50)	580	(40)
Hydraulic pump motor – HP (kW)	15	(11.18)	15	(11.18)	15	(11.18)	20	(14.91)	30	(22.37)
Recirculation motor – HP (kW)	1.5	(1.12)	2	(1.49)	2	(1.49)	2	(1.49)	1.5	(1.12)
Conveyor motor – HP (kW)	1	(.75)	1	(.75)	1	(.75)	1	(.75)	1	(.75)
Approx. overall width* – ins. (mm)	108	(2744)	108	(2744)	108	(2744)	108	(2744)	111.21	(2825)
Approx. overall depth* – ins. (mm)	91.94	(2335)	91.94	(2335)	91.94	(2335)	91.94	(2335)	116.38	(2956)
Approx. overall height* – ins. (mm)	147.44	(3747)	147.44	(3747)	147.44	(3747)	151.44	(3848)	178.25	(4528)
Approx. net weight* – lbs. (kg)	24,400	(11,067)	24,400	(11,067)	24,400	(11,067)	29,600	(13,426)	43,500	(19,731)

*Specifications and appearance subject to change without notice. Contact factory for acoustics data and exact specifications.
All dimensions are Center discharge models unless otherwise noted. *With standard accessories.*

Milnor other extraction options include:



Two-stage press: Processes two loads concurrently for optimal production. Ideal for cottons, most blends. Pre-press removes trapped water. Now with 7.5 in. (190.5 mm) thick solid steel base.



Centrifugal extractor: Excellent for garments, dust mats, 100% polyester textiles (including surgery and barrier cloth items), plus cottons and blends.

Printed in U.S.A.
© Pellerin Milnor Corporation
B22SL89026/10316



Pellerin Milnor Corporation
P.O. Box 400, Kenner, LA 70063-0400 USA
504-712-7656 • 800-469-8780
Fax: 504-468-3094
E-mail: mktg@milnor.com
www.milnor.com